



PRODUCT & DESIGN CATALOG

METPAR RESTROOM PARTITIONS



Since 1952, Metpar Corporation has earned the reputation for providing industry-leading design and quality restroom partitions, dressing dividers, and shower dividers to the architectural and design communities.

Metpar is a full-line manufacturer providing partitions constructed of powder coated steel, stainless steel, and phenolic. All Metpar partitions are manufactured in the USA.

SOLID PHENOLIC -BLACK CORE



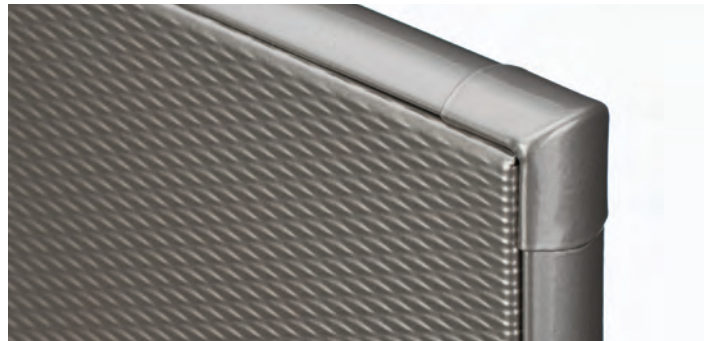
Solid Phenolic (Black Core) is composed of melamine decorative surfaces applied to a number of resin impregnated Kraft sheets to achieve a desired uniform thickness. This unique material is formed under high pressure to achieve a one-piece solid black core panel of superior strength. The standard phenolic has a Class B fire rating based under the ASTM E-84 testing guidelines. (Also available with an optional Class A fire rating). This heavy duty water-proof material will not delaminate and provides a damage resistant surface. Phenolic is available in a wide variety of designer colors and wood grain options to appeal to any decorating taste. This material is an excellent choice for high traffic vandal-prone environments and is ideal for high humidity locations. Phenolic is widely used in stadiums, concert arenas, theaters and airports.

POWDER SHIELD



Powder coated steel toilet partitions are a popular choice for new construction or restroom remodeling. This product provides overall quality and durability at an economical price. The powder coated finish is electrostatically applied to galvanized steel. This protects against corrosion and provides an excellent surface for adhesion, resulting in a long-lasting, smooth finish. The powder coated finish is highly resistant to humidity, stains, scratching, and scuffing. Constructed with a sound absorbing honeycomb core, these partitions are ideal for, offices, churches, libraries, and high traffic areas. This product offers easy installation with minimal maintenance and upkeep. The line is available in a variety of standard or custom colors to compliment any restroom design.

DUR-A-TEX™



Dur-A-Tex™ toilet partitions are a highly durable, vandal resistant, diamond textured steel product. The finish utilizes a unique two-coat painting process which applies a high gloss clear coat over a variety of base coat color options. This process vastly improves the resistance to graffiti and corrosion while extending the service life of the product. Dur-A-Tex delivers a rich, upscale appearance that will enhance and beautify any restroom decor. Dur-A-Tex™ has become a popular choice for architects, designers, and building owners who seek a higher end appearance. These would include, restaurants, casinos, banks and office spaces.

STAINLESS STEEL



Stainless steel toilet partitions provide a luxurious modern appearance to any commercial restroom environment. The high end finish of stainless steel imparts a visual beauty unmatched by any other materials. The material design combines the strength of 304 stainless steel with the elegance of a directional brushed finish. The rust-proof nature of stainless steel offers years of durability, ease of cleaning, and completely resistant to humid conditions. Constructed with a sound absorbing, faced honeycomb core, stainless partitions are an excellent choice for hospitals, restaurants, airports, and other high usage areas. Also available with optional textured finishes, stainless steel partitions will compliment any design scheme, in new or renovated restrooms.

SOLID PHENOLIC COLOR THRU



Phenolic (Color Thru) is composed of melamine decorative surfaces applied to a number of resin impregnated Kraft sheets to achieve a desired uniform thickness. This unique material is formed under high pressure to achieve a one-piece color thru panel of superior strength. The standard color thru phenolic has a Class A fire rating based under the ASTM E-84 testing guidelines. This heavy duty water-proof material will not delaminate and provides a damage resistant surface. Phenolic is available in a variety of designer colors and wood grain options to appeal to any decorating taste. This material is an excellent choice for high traffic vandal-prone environments and is ideal for high humidity locations. Phenolic is widely used in stadiums, office buildings, theaters and airports.



STANDARD

Available in all materials and configurations (floor mounted overhead braced, floor braced, ceiling hung, and floor to ceiling), standard partitions include 58" (1473mm) high doors and panels that are mounted 12" (304mm) above finished floor.

Optional packages for no-sight doors and continuous brackets are available.

DORIAN

Available in all materials and configurations (floor mounted overhead braced, floor braced, ceiling hung, and floor to ceiling), the Dorian series includes 64" (1626mm) high doors and panels that are mounted 6" (152mm) above finished floor. Includes no-sight doors and continuous brackets.



DORIAN MAX

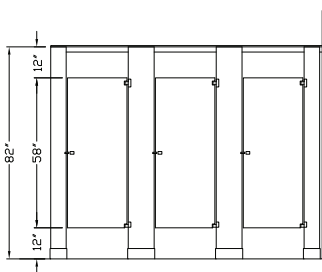
Available in all materials and configurations (floor mounted overhead braced, floor braced, ceiling hung, and floor to ceiling), the Dorian series includes 72" (1829mm) high doors and panels that are mounted 6" (152mm) above finished floor. Included with this design are no-sight doors and continuous brackets

SOLITUDE

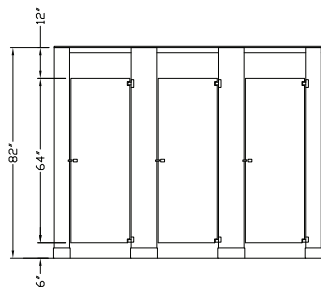
Available in solid phenolic black core and color core materials. The design is pedestal mounted and overhead braced. Solitude series includes 78" (1981mm) high doors and panels that are mounted 4" (102mm) above the finished floor. (Optional 9" elevation available 72" (1829mm) high doors and panels). Included with this design are no-sight doors, stainless steel continuous brackets and stainless steel tubular head rail.



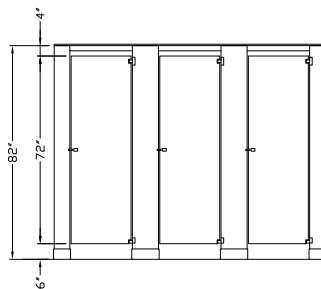
	MATERIAL	OVERHEAD BRACED	FLOOR BRACED	CEILING HUNG	FLOOR TO CEILING	STANDARD DOOR HARDWARE	OPTIONAL DOOR HARDWARE	STANDARD CONNECTING BRACKETS	OPTIONAL CONNECTING BRACKETS	NO-SIGHT PROVISION FOR DOORS
STANDARD	Powder Shield	Y	Y	Y	Y	Chrome	Stainless Steel	Chrome	Stainless Steel	N/A
	Dur-A-Tex	Y	Y	Y	Y	Chrome	Stainless Steel	Chrome	Stainless Steel	N/A
	Stainless Steel	Y	Y	Y	Y	Chrome	Stainless Steel	Chrome	Stainless Steel	N/A
	Phenolic	Y	Y	Y	Y	Stainless Steel	Stainless Steel	Stainless Steel	Stainless Steel	N/A
PRIVACY - DORIAN	Powder Shield	Y	Y	Y	Y	Chrome	Stainless Steel	Continuous Aluminum	Stainless Steel	Aluminum Extrusion
	Dur-A-Tex	Y	Y	Y	Y	Chrome	Stainless Steel	Continuous Aluminum	Stainless Steel	Aluminum Extrusion
	Stainless Steel	Y	Y	Y	Y	Chrome	Stainless Steel	Continuous Aluminum	Stainless Steel	Aluminum Extrusion
	Phenolic	Y	Y	Y	Y	Stainless Steel	Stainless Steel	Continuous Aluminum	Stainless Steel	Continuous Hinge / Overlap Strike Edge
PRIVACY - DORIAN MAX	Powder Shield	Y	Y	Y	Y	Chrome	Stainless Steel	Continuous Aluminum	Stainless Steel	Aluminum Extrusion
	Dur-A-Tex	Y	Y	Y	Y	Chrome	Stainless Steel	Continuous Aluminum	Stainless Steel	Aluminum Extrusion
	Stainless Steel	Y	Y	Y	Y	Chrome	Stainless Steel	Continuous Aluminum	Stainless Steel	Aluminum Extrusion
	Phenolic	Y	Y	Y	Y	Stainless Steel	Stainless Steel	Continuous Aluminum	Stainless Steel	Continuous Hinge / Overlap Strike Edge
SOLITUDE	Phenolic	Y	N/A	N/A	N/A	Stainless Steel	N/A	Continuous Stainless Steel	Stainless Steel	Overlapping Edge Hinge Side / Strike Side



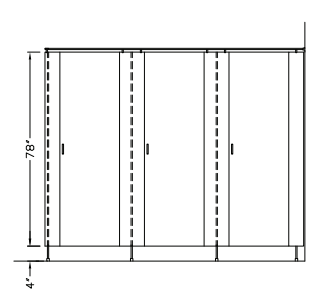
STANDARD



DORIAN



DORIAN MAX



SOLITUDE



FP-500 CORINTHIAN

FLOOR MOUNTED OVERHEAD BRACED

Suitable for areas where high strength is required. Includes a floor anchored design with an aluminum head rail support. Most popular style. Available in all materials types.

FT-700 LUXOR

FLOOR BRACED

Floor braced design features a heavy-duty floor mounting system. It provides a consistent appearance across the top of panels and pilasters for a modern uniform appearance. Available in all materials types.



CH-700 FORUM

CEILING HUNG

The ceiling hung mounting style provides for unobstructed floor space beneath the stalls. This design enables easy access for maintenance and cleaning. Available in all material types.



FLOOR TO CEILING

Recommended for areas where maximum stability is desired. Pilasters are anchored to both the floor and ceiling. Available in all material types.



SOLITUDE

PEDESTAL MOUNTED

Low floor clearance provides for enhanced privacy with elegant foot supports that are stepped back to achieve the appearance of a floating wall of partitions. Available in 4" or 9" elevations. Available in phenolic material only.



A CONTEMPORARY EURO DESIGN PRIVACY SYSTEM

Solitude provides a contemporary, high quality sleek appearance through aesthetically pleasing clean lines, flush fronts, and no visible fasteners. Specifically designed overlapping vertical edges ensure door and pilaster meet edge-to-edge for no-peek maximum privacy. Low floor clearance provides for enhanced privacy with elegant foot supports that are stepped back to achieve the appearance of a floating wall of partitions. Solitude design offers a superior high-end appearance that creates an unrivaled architectural statement for areas where luxury and uncompromising style are essential.

Design Features

- Vertical door edges are overlapping, creating a completely flush front and no-peek sightline system.
- Elegant heavy-duty support pedestals are set back to create a completely floating appearance.
- Superior privacy achieved with 78" high panels and doors mounted 4" above the floor. Also available with 9" pedestals and 72" high panels and doors
- All hardware and fittings are brushed stainless steel, engineered in a slim and concealed European design.
- Each stall is outfitted with a decorative stainless steel occupancy indicator latch.
- Overhead system features heavy-duty brushed stainless steel tubular head rail.
- 15 Year warranty.
- Available in class A fire rating.





DESIGN FEATURES

- Construction features 1" thick doors and panels, 1-1/4" pilasters, constructed of two sheets of galvaneal steel, formed and cemented under pressure to a honeycomb core.
- All edges are finished with 22-gauge interlocking steel moldings. Internally welded, corners are finished with pre-formed stainless steel reinforcements.
- Doors feature internal steel reinforcements to secure hardware items. Provided with "in-use" indicator latch.
- Rust inhibitive coated material is painted with multiple coats of epoxy-hybrid powder, applied electrostatically and baked until cured.
- Standard wall fittings are chrome-plated die-cast Zamac.
- 4 Year warranty.
- Class A fire rating.



The door features a unique ADA compliant concealed slide latch with a two color (green/red) "in use" indicator. The latching system is designed to provide emergency accessibility from the outside of the stall. Hardware is constructed of chrome plated, Zamac die cast metal.



DESIGN FEATURES

- Standard construction features 1" thick doors and panels, (1-1/4" pilasters), constructed of stainless steel, formed and cemented under pressure to a double faced paper constructed honeycomb core.
- All edges are finished with a 22-gauge stainless steel interlocking molding.
- Internally welded, corners are finished with pre-formed stainless steel reinforcements.
- Doors have internal steel reinforcements to secure hardware items, and come equipped with the "in-use" color-coded indicator.
- Wall fittings are chrome plated Zamac die-castings. Hardware features emergency outside access to stall.
- 6 Year warranty.
- Class A fire rating.



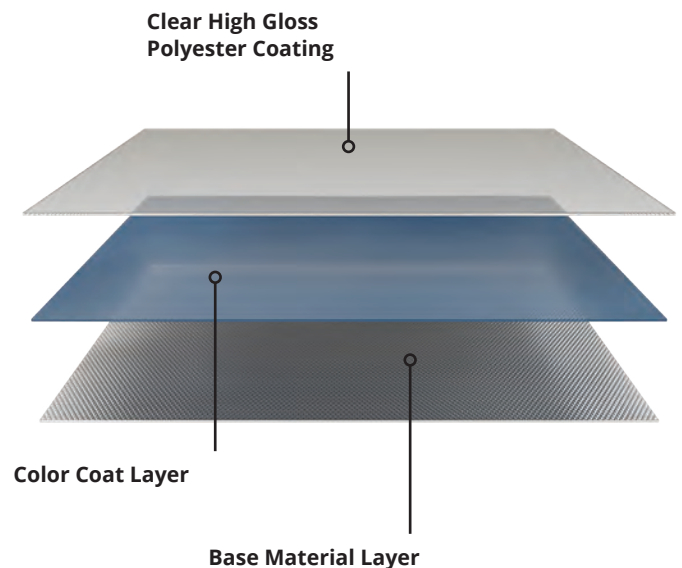
Premium finishes are available in both SSM Pattern and Leather-Grain Finish. Both feature textured surfaces exhibiting the luster of a polished satin finish.



DUR-A-TEX™ MATERIAL IS MANUFACTURED WITH A UNIQUE FINISHING PROCESS UTILIZING A CLEAR, HIGH GLOSS POLYESTER COATING. THIS OUTER PROTECTIVE LAYER IS APPLIED ONTO THE DECORATIVE BASE COAT WHICH HAS BEEN ELECTROSTATICALLY APPLIED TO A DIAMOND TEXTURED GALVANNEALED STEEL. THIS PROCESS RESULTS IN INCREASED DURABILITY, EXTREME GRAFFITI RESISTANCE, AND HIGH END LUXURIOUS GLOSSY APPEARANCE.

DESIGN FEATURES

- Dur-A-Tex™ has a graffiti-resistant coating applied at high temperatures that prevents damage due to vandalism and extends the life of the product by preventing corrosion.
- Salt Spray tests on Dur-A-Tex™ per ASTM B117 has shown 2 times the corrosion resistance as compared to partitions with standard finishes.
- Texture pattern improves the strength of partition surface and damage resistance.
- Graffiti is easily removed from the high gloss textured surface.
- 5 Year warranty.
- Class A fire rating.



PHENOLIC BLACK CORE

DESIGN FEATURES

- Doors and pilasters are 3/4" thick, panels are 1/2" thick, and are standard with a class-B Fire rating. (Optional class-A available)
- Black edges are polished and beveled.
- Wall and pilaster brackets are 13-gauge, type 304 stainless steel.
- All hardware and brackets are stainless steel.
- Optional full height stainless steel brackets available.
- 15 year warranty



Optional privacy feature



PHENOLIC COLOR THRU

DESIGN FEATURES

- Doors and pilasters are 3/4" thick, panels are 1/2" thick, and come with a class-A fire rating
- Color-Thru edges are polished and beveled.
- Wall and pilaster brackets are 13-gauge, type 304 stainless steel.
- All hardware and brackets are stainless steel.
- Optional full height stainless steel brackets available.
- 15 year warranty.





TYPE "WH"

Available in:

- All material types

Mounting :

- Wall mounted only (3 stirrup brackets)

Measurements:

- 42" high (1,067mm)
- 48" high (1219mm)

Depth :

- 12" (305mm)
- 18" (457mm)
- 24" (610mm)

Options:

- Full-height brackets



TYPE "PF"

Available in:

- All material types

Mounting :

- 1-3/4" (44mm) square aluminum tube support to floor
- Stirrup brackets to wall

Measurements:

- 55" high (1397mm) Polly only
- 58" high 1,473mm)
- 64" high (1625mm)
- 72" high (1829 mm)

Depth:

- All sizes up to 36" (914mm)

Options

- Full-height brackets



TYPE "FT"

Available in:

- All material types

Mounting:

- Stirrup brackets to wall
- FT-700 Floor mounted Pilaster

Measurements:

- 55" high (1397mm) Polly only
- 58" high (1,473mm)
- 64" high (1625mm)
- 72" high (1829 mm)

Depth:

- All standard size depths available

Options:

- Floor-ceiling
- Full-height brackets



FLOOR TO CEILING POST

Available in:

- All material types

Measurements:

- 55" High (1397mm) Polly only
- 58" high (1,473mm)
- 64" high (1625mm)
- 72" high (1829mm)

Depth :

- All standard size depths available
- 1 3/4" (44mm) square aluminum tube

Options:

- Full-height brackets

FEATURED PROJECTS



BARCLAYS CENTER, NEW YORK



SHAKE SHACK, NEVADA



BAYLOR UNIVERSITY, TEXA



FREEDOM TOWER, NEW YORK

FEATURED PROJECTS



GEORGE W. BUSH PRESIDENTIAL LIBRARY, TEXAS



METLIFE STADIUM, NEW JERSEY



LOS ANGELES INTERNATIONAL AIRPORT, CALIFORNIA



MOHEGAN SUN CASINO & RESORT, CONNECTICUT



T-MOBILE CAMPUS, KANSAS



METPAR CORPORATION

460 T. Elmer Cox Drive Greenville, TN 37743
Phone: 516.333.2600 E-mail: sales@metpar.com

