



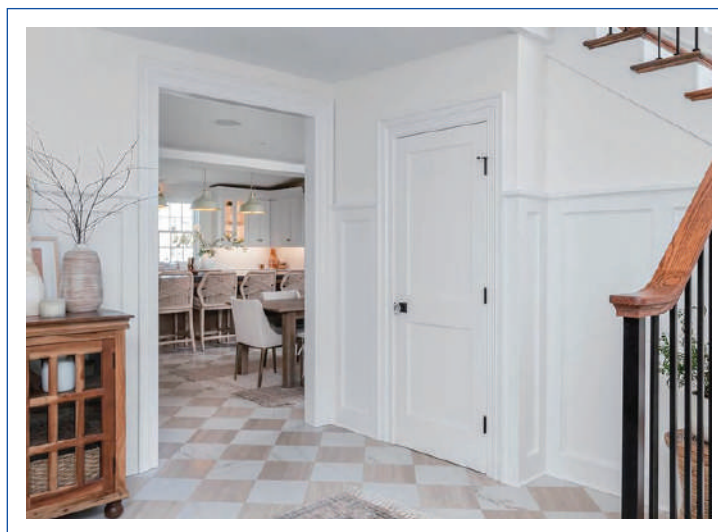
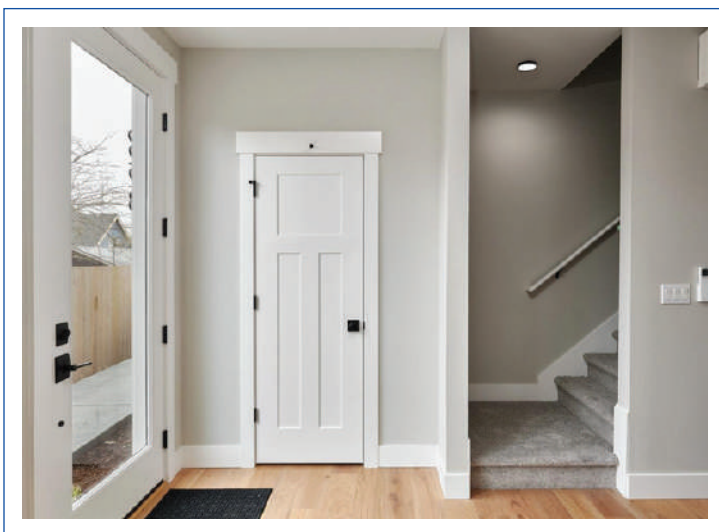
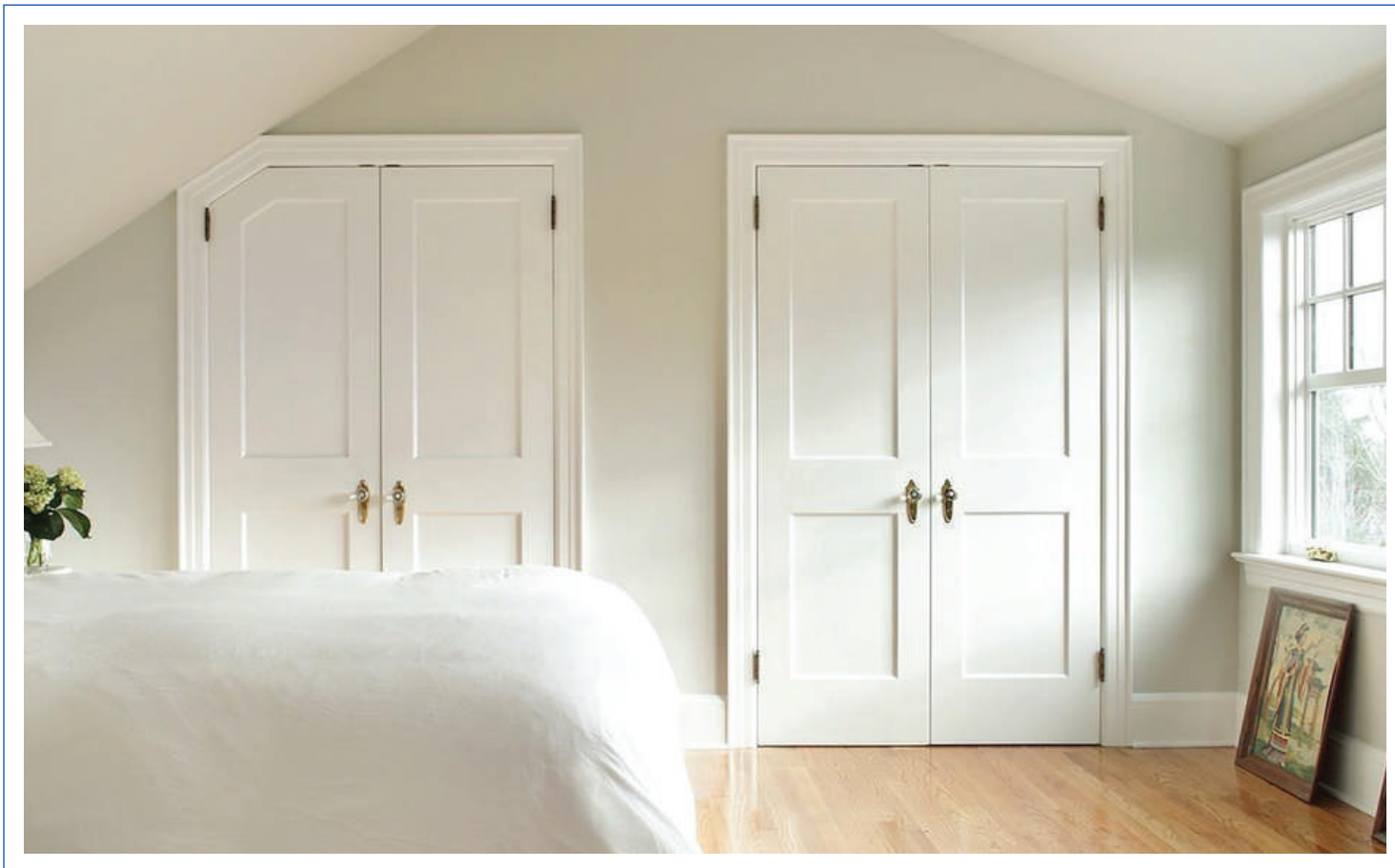
**INTERIOR DOOR**  
**CATALOG**

*Garris*  
**DIRECT**

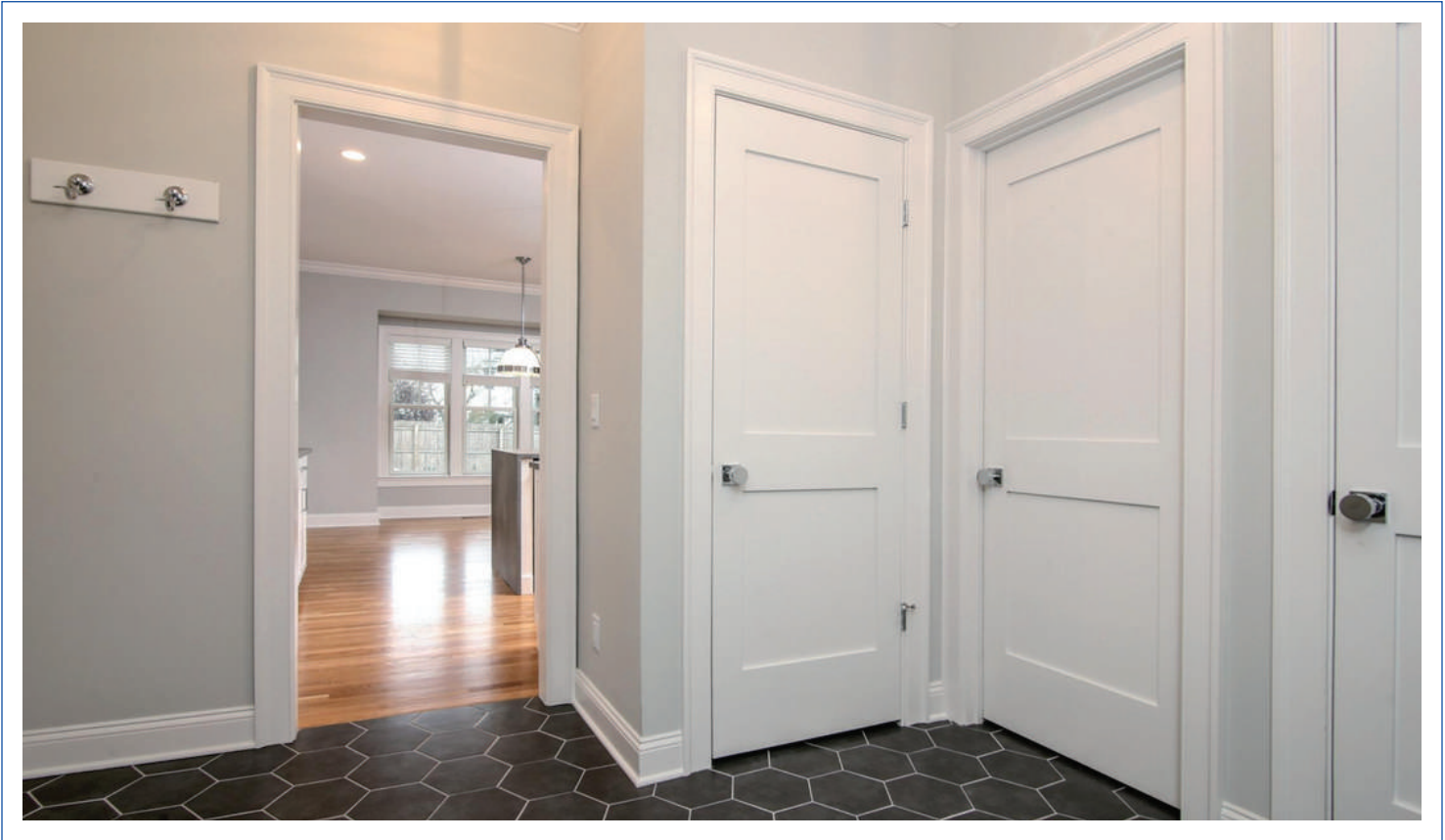
# SHAKER DOORS

Timeless, clean-lined doors crafted for enduring beauty and versatility in any interior.

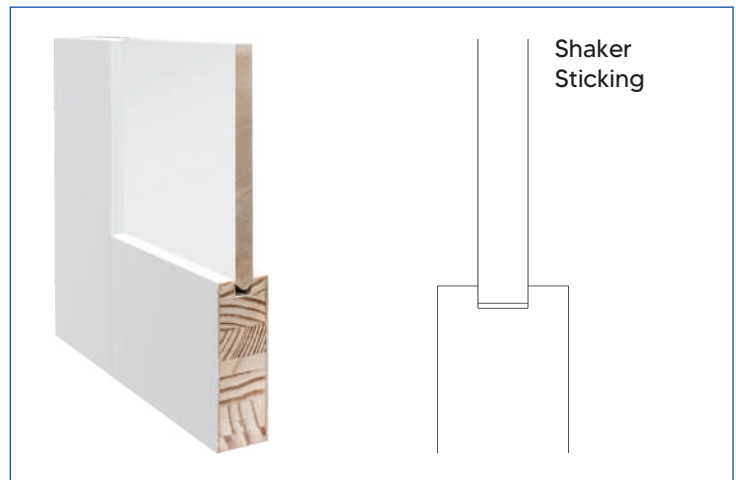
*Garris*  
**DIRECT**



# INTERIOR SHAKER DOORS



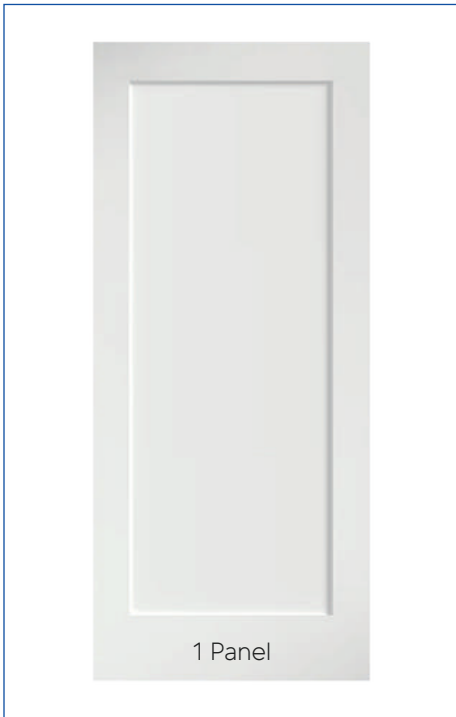
## DESIGN CROSS-SECTION



\*Simple. Versatile. Timeless. Shaker doors offer a clean, minimalist look that complements both modern and transitional interiors—available in multiple panel configurations and standard sizes.

# SHAKER DOORS

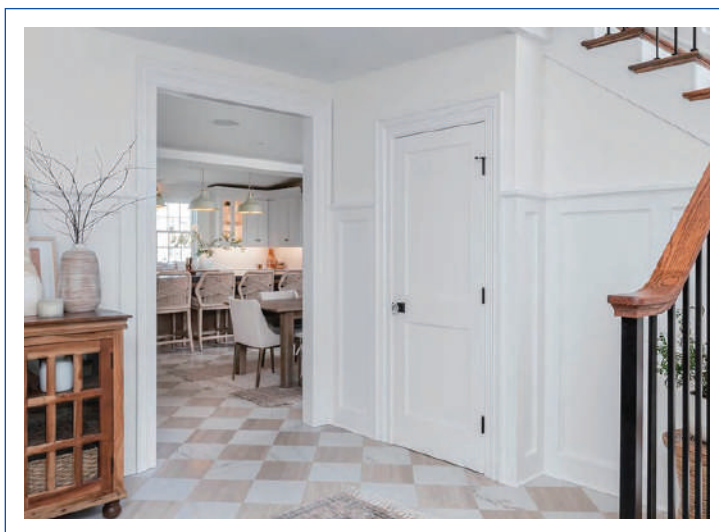
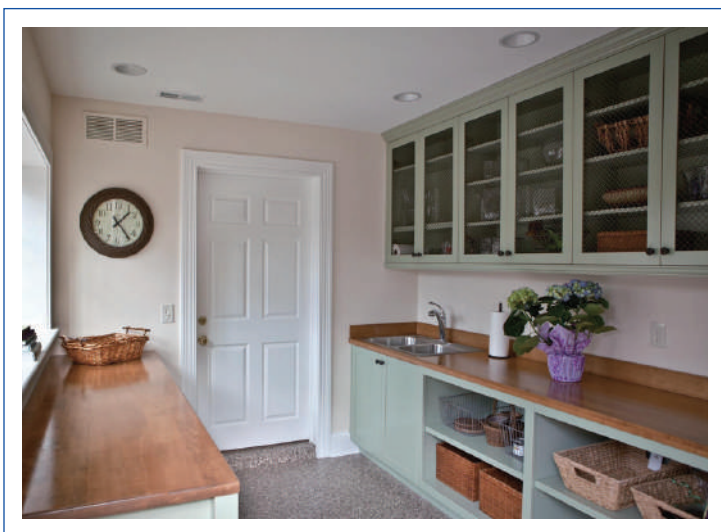
## DESIGN OPTIONS



# MOLDED DOORS

Stylish, durable molded doors designed to bring depth, detail, and lasting performance to any

*Garris*  
**DIRECT**



# INTERIOR MOLDED DOORS



## SOLID PARTICLE CORE (SC)

- ✓ Weight and feel of a wood door
- ✓ Reduces sound transmission
- ✓ Reeb® stocks Solid Particle Core doors with wood stiles and rails for additional screw holding power
- ✓ Great for residential and light commercial applications like living rooms, bedrooms, hallways and large storage areas
- ✓ Can be fire-rated up to 20 minutes with certified frames and hardware

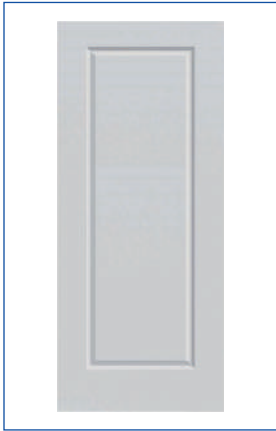


## HOLLOW CORE (HC)

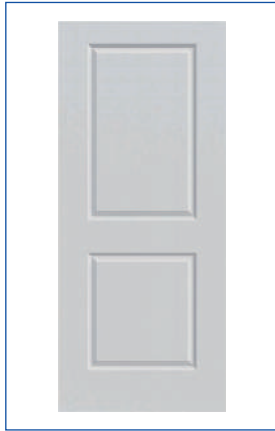
- ✓ Standard offering includes MDF/fiber stiles
- ✓ Commonly used in residential applications where sound transmission and durability is not a primary concern

# MOLDED DOORS

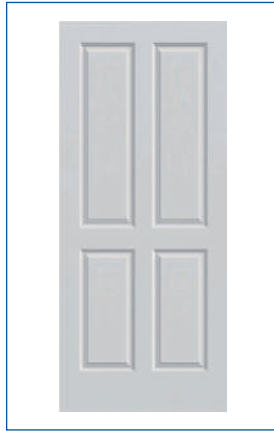
## MOLDED DESIGN



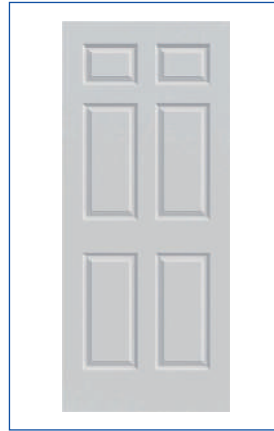
1 Panel



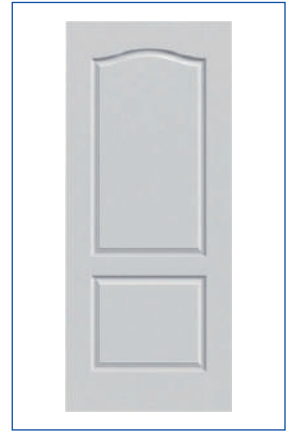
2 Panel



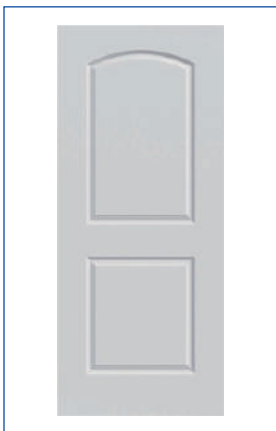
4 Panel



6 Panel



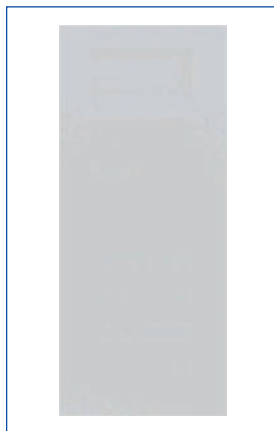
2 Panel Arch-Top



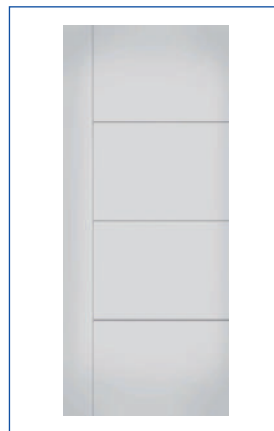
2-Panel-Roman-Smooth



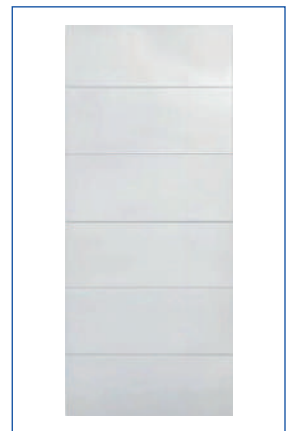
Riverside 5 Panel



Flush



5 Horizontal Panel



6 Horizontal Panel



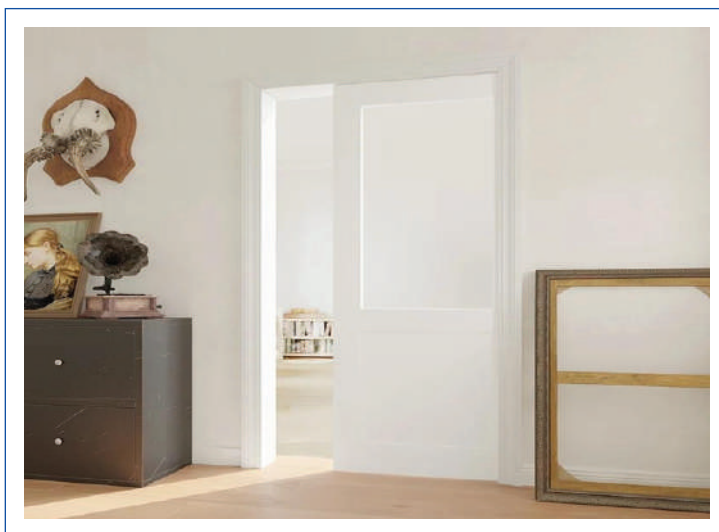
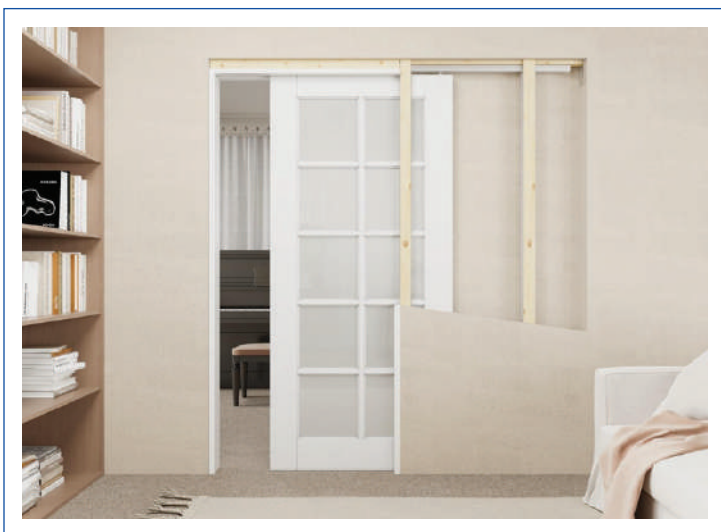
7 Horizontal Panel

\*Molded panel doors offer timeless styling with a variety of raised and recessed profiles- ideal for traditional, classic, or decorative interiors seeking added detail and depth.

# POCKET DOORS

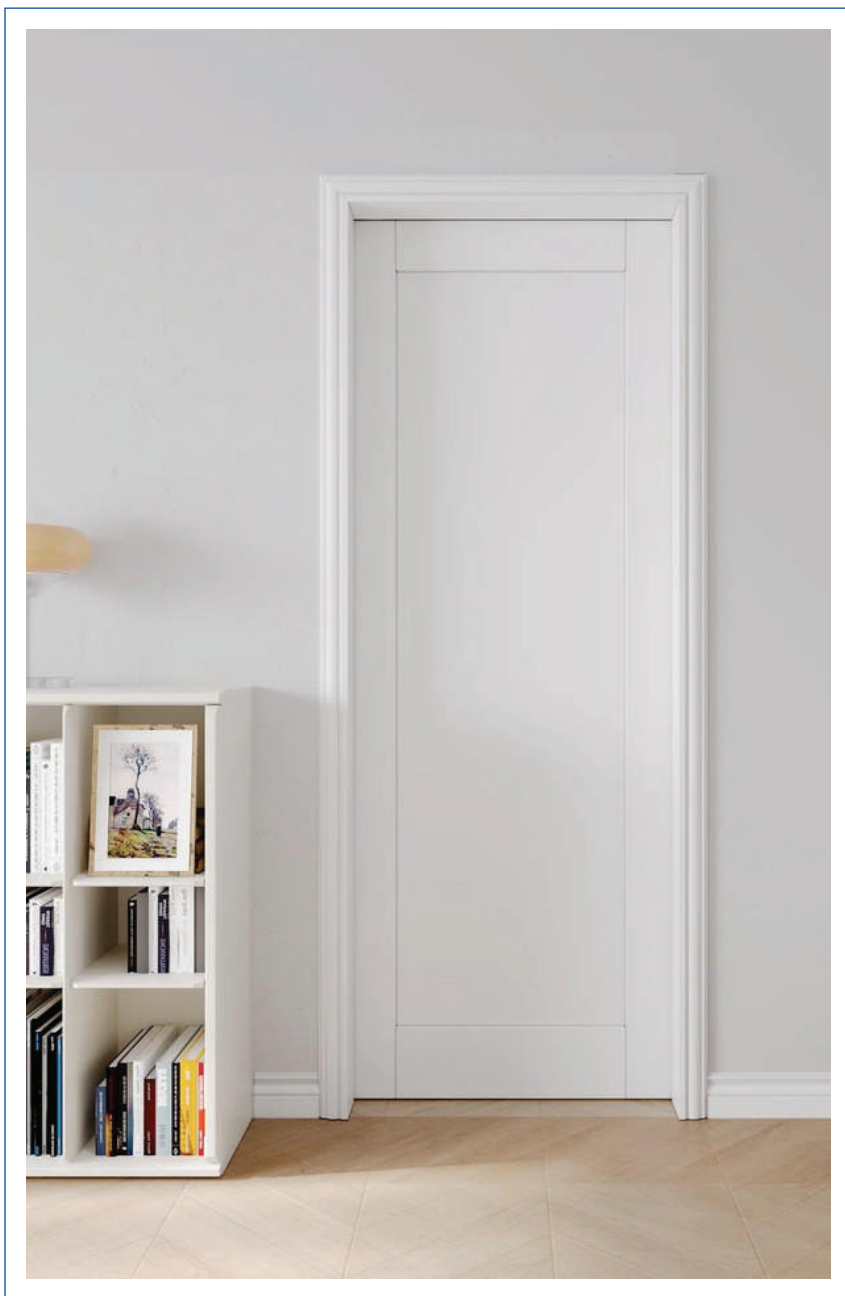
Sleek pocket doors offering seamless design and smart space-saving functiona

*Garris*  
DIRECT



# CRAFTED BY EXPERTS. TRUSTED AROUND THE WORLD.

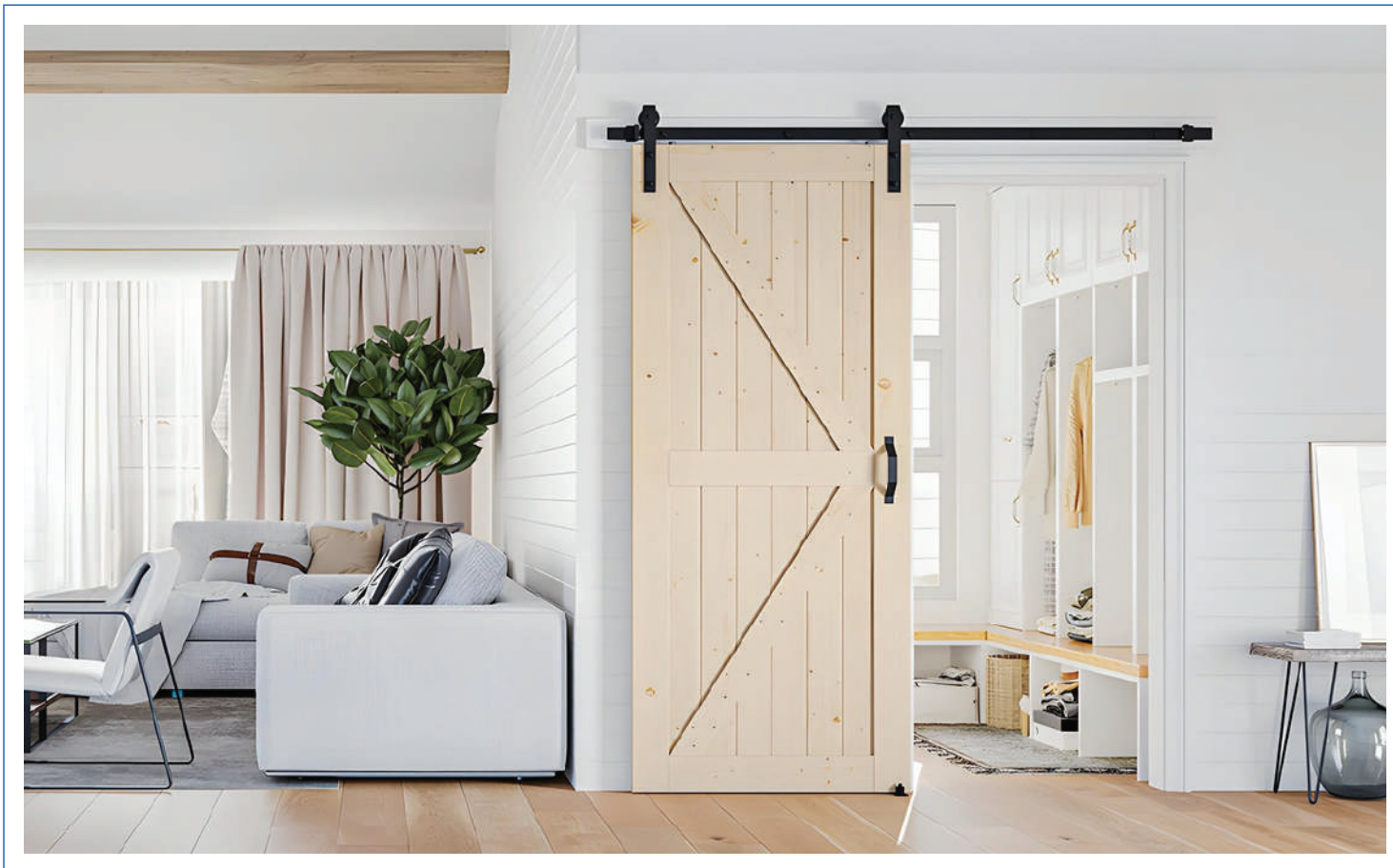
With years of experience in wood-based building materials, we deliver high-quality doors, mouldings, and cabinets designed for performance, style, and long-term value. Whether you're outfitting a single home or managing large-scale projects, we're here to support you—every step of the way.



# BARN DOORS

Stylish barn doors combining rustic charm with modern functionality.

*Garris*  
**DIRECT**



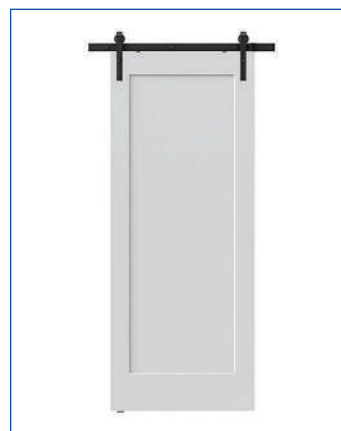
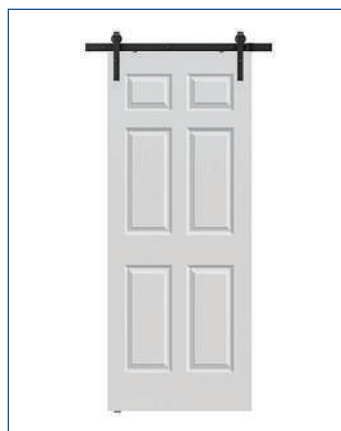
# BARN DOORS

## DESIGN OPTIONS



## MOLDED BARN

## SHAKER BARN

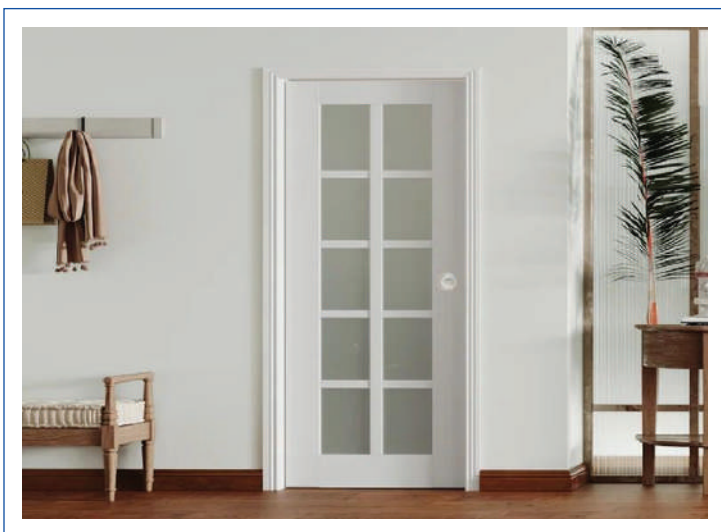


\*With a variety of styles, colors, and panel layouts, our barn doors adapt to modern, farmhouse, or transitional spaces—offering both visual character and functional flexibility.

# FRENCH DOORS

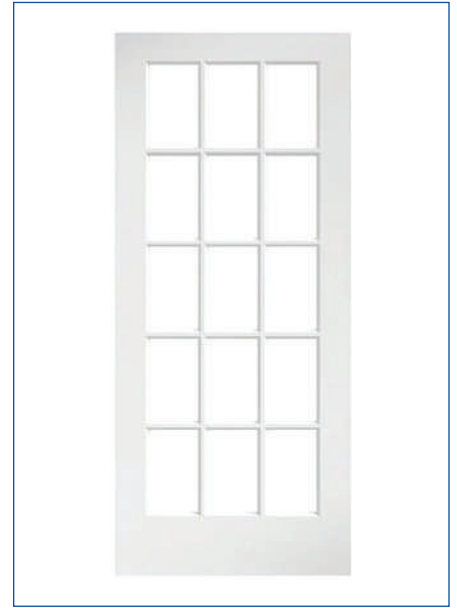
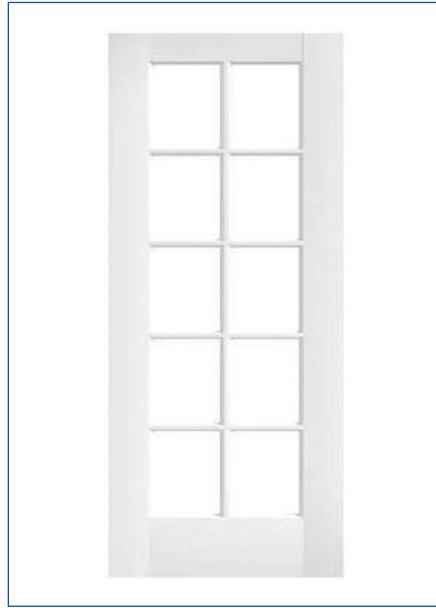
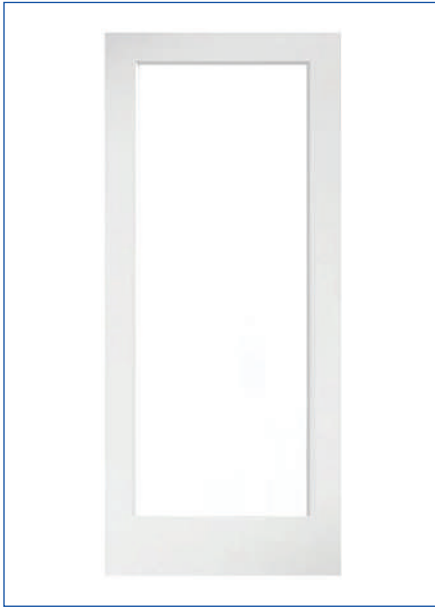
Elegant French doors bringing light, charm, and timeless sophistication to any space.

*Garris*  
**DIRECT**



# FRENCH DOORS

## DESIGN OPTIONS



## DOUBLE DOOR DESIGN

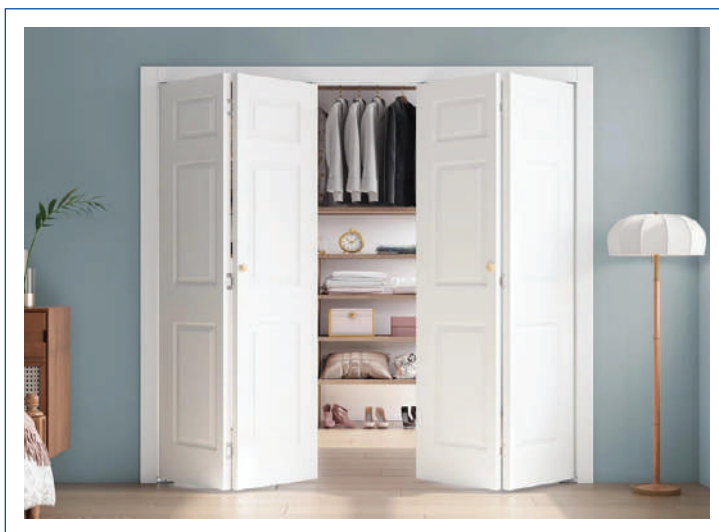
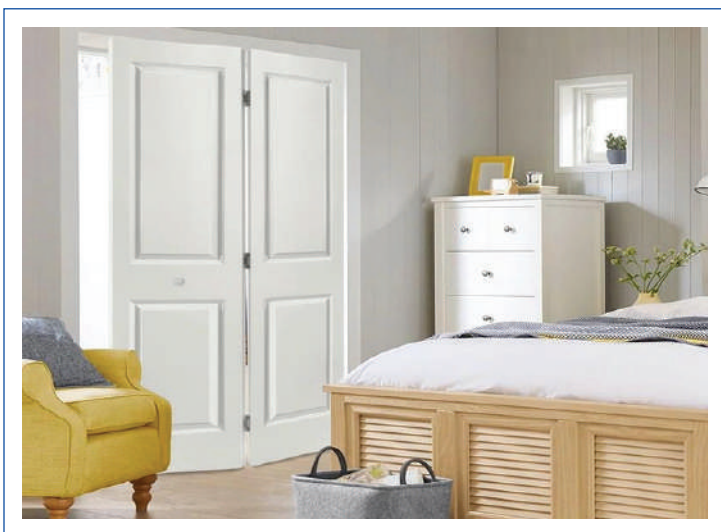


\*Our French door design options cater to diverse tastes and functional needs. Available in single or double door setups, these designs not only elevate your interior style but also improve space connectivity.

# FOLDING DOORS

Space-saving folding doors designed for smooth function and modern versatility.

*Garris*  
**DIRECT**



# FOLDING DOOR

MOLDED  
FOLDING



SHAKER  
FOLDING



DESIGN  
OPTIONS

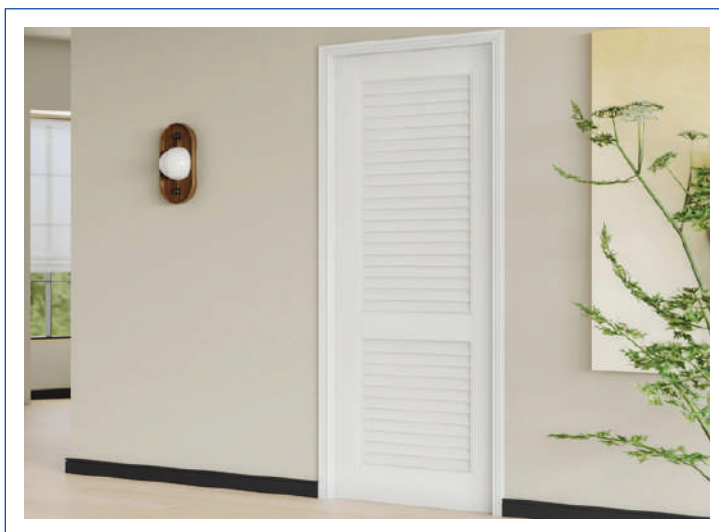


\*From classic molded styles to contemporary shaker and decorative louvered panels, our folding doors blend functionality with style. Whether you're updating a bedroom, utility area, or hallway, there's a design to complement every interior.

# LOUVERED DOORS

Functional louvered doors combining airflow, privacy, and timeless style.

*Garris*  
**DIRECT**



# INTERIOR LOUVERED DOORS



## LOUVER STYLE

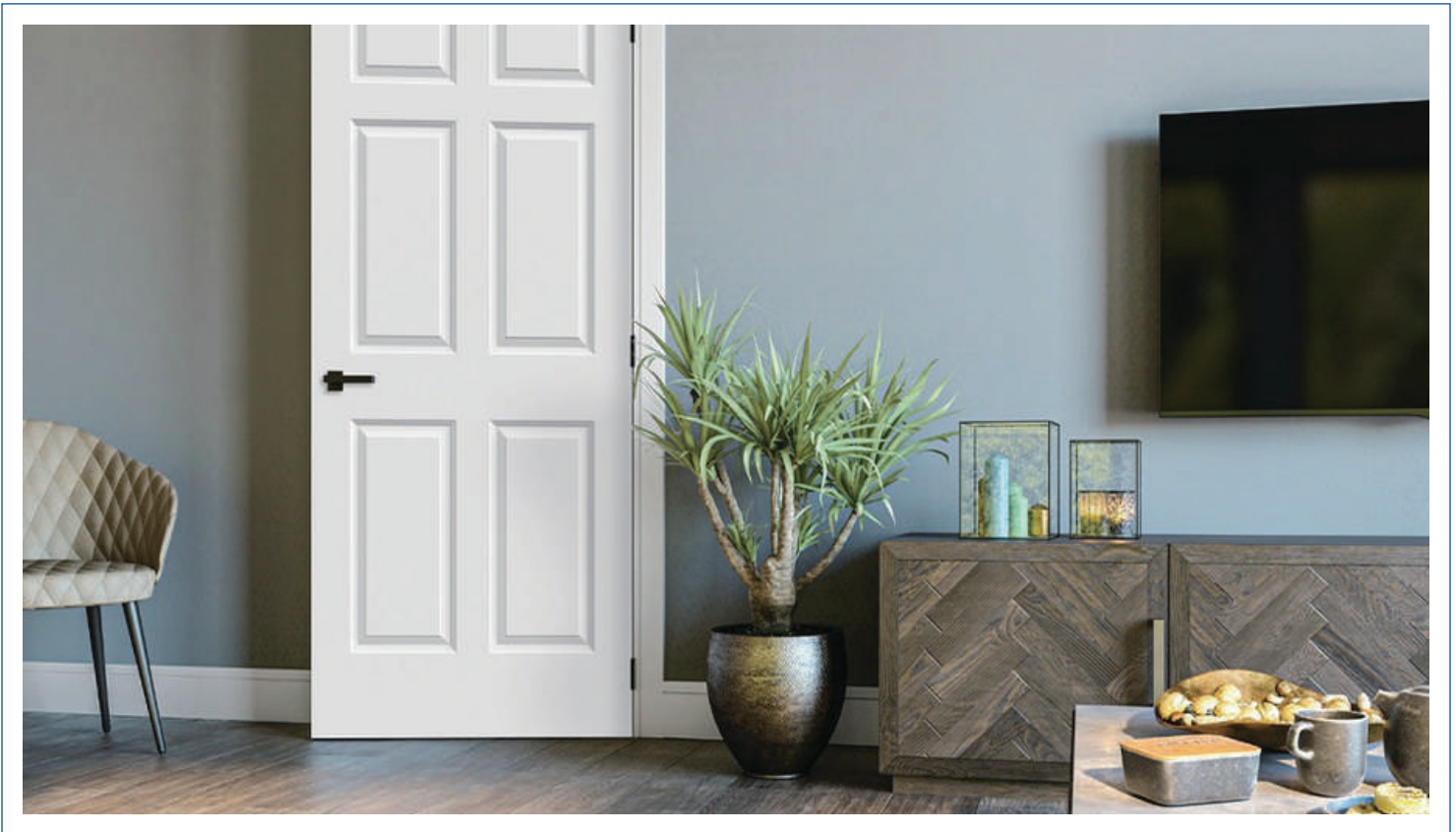


Our louver doors offer the perfect balance of style and function, with designs ranging from timeless plantation elegance to modern coastal vibes. Beyond their aesthetic appeal, these doors provide privacy while allowing airflow, making them ideal for various spaces.

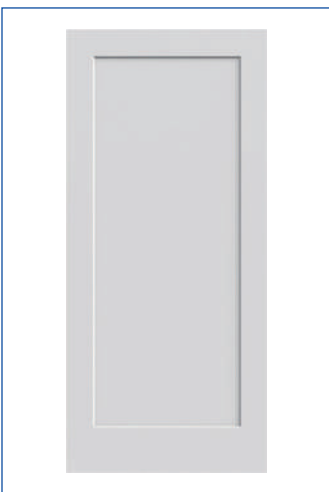
With louver panels available in both vented and non-vented configurations, they can be seamlessly integrated into most of our panel doors, adding a versatile and customized touch to your interiors.

\*Designed for style and ventilation, our louvered doors offer the ideal balance of beauty and practicality. Whether used for closets, pantries, or room dividers, they allow for natural airflow while adding timeless charm to any space.

# INTERIOR MOLDED DOORS



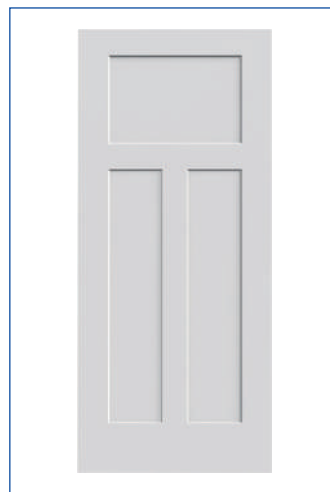
## SHAKER STYLE DESIGN



Shaker Style 1 Panel



Shaker Style 2 Panel



Shaker Style 3 Panel



Shaker Style 5 Panel

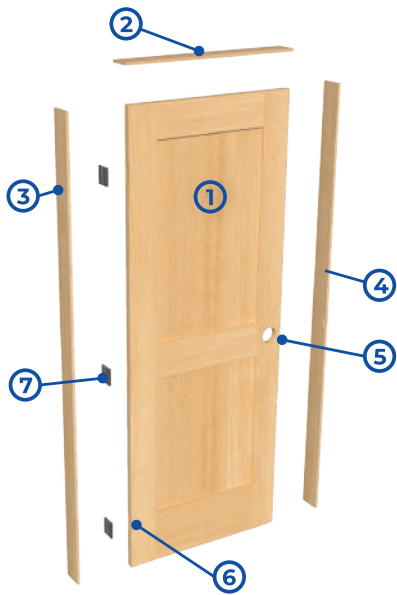
\*Featuring clean lines and flat panels, Shaker doors bring a minimalist, modern touch to any interior—perfect for contemporary homes and versatile enough for transitional spaces.

# PRE-HUNG DOOR COMPONENTS

All pre-hung door units, whether interior or exterior, consist of the same essential components.

The door is attached to the hinge jamb with hinges. Lock and latch hardware is not generally considered part of the pre-hung door as it is installed after the unit has been installed in the opening. In addition to these components, some units will include casing on one or both sides, and exterior units can have a sill installed.

Generally, if a door unit is assembled when shipped from the manufacturer to its destination, it is referred to as a "pre-hung door." If the components are machined but not assembled when shipped, it is known as a K.D. (Knock Down) Unit.



## DOOR COMPONENTS

- ✓ 1. SLAB
- ✓ 2. HEAD JAMB (HEADER)
- ✓ 3. HINGE JAMB
- ✓ 4. STRIKE JAMB
- ✓ 5. BORE
- ✓ 6. HINGE MORTISE
- ✓ 7. HINGE & HINGE PIN

### OUTSWING



RH

LH



EXTERIOR

### INSWING



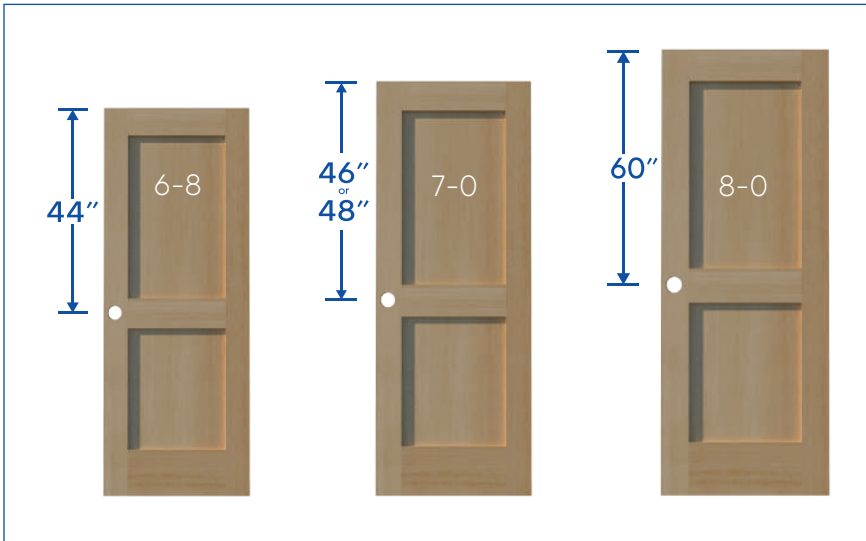
LH

RH



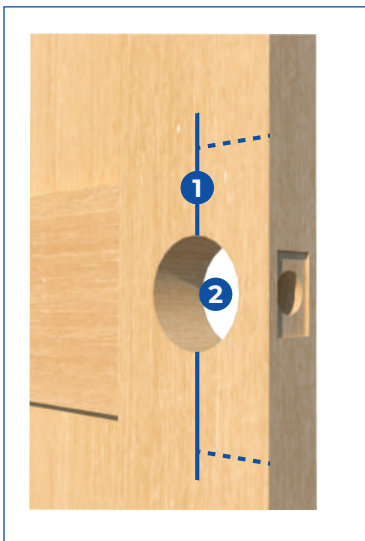
EXTERIOR

# LOCK HEIGHT

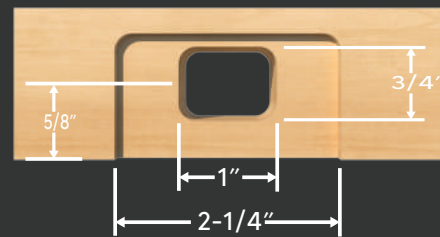
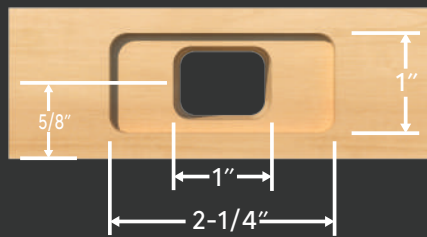


Lock height is the distance from the top of the door to the center of the lock bore. Standard lock heights are 44" on 6'8", 46" or 48" on 7'0" doors, and 60" on 8'0" doors.

Because of variations in door length (i.e., doors are not necessarily the precise length their labeling would indicate), lock height is always measured from the top of the door. This ensures that proper header clearance is maintained and that the lock hardware aligns with the machining and hardware in the strike jamb.



## STRIKEPLATE TEMPLATES



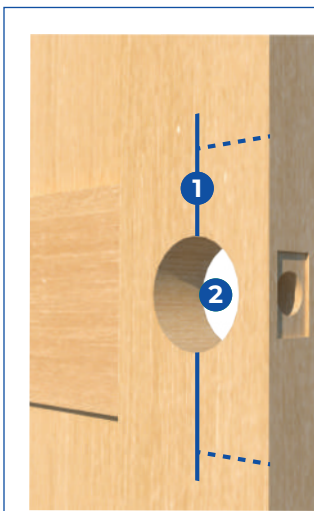
### BACKSET

The backset is the distance a lock is centered from the front edge of the door. For residential applications, the backset is 2-3/8" or 2-3/4". The commercial market backsets are usually 2-3/4" or 5".

### 1. BACKSET

### 2. BORE

One method of defining backset is measuring from the centerline of the door's edge to the center of the lock bore.



## LOCK AND DEADBOLT MATCHING

1. Deadbolt Bore
2. Latch Bore
3. Faceplate Mortise
4. Deadbolt Spacing

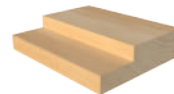
### FLAT JAMB

WITH STOP APPLIED



### SINGLE

RABBETED  
JAMB KERF/NO KERF



### DOUBLE

RABBETED JAMB



### SPLIT JAMB



JAMB CROSS SECTIONS

# HINGES

Hinges allow the door to open and close. For increased durability and smooth operation, it is recommended to use ball bearing hinges for heavier doors, such as solid particle core doors. When using a standard 1-3/8" thick door, a 3-1/2" x 3-1/2" hinge is typically used. When using a 1-3/4" thick door, a 4" x 4" hinge is typically used.



Non-Ball Bearing Square



Non-Ball Bearing Radius

Non-Ball Bearing Hinges	US1D	US3	US4B	US5	US10B	US15	US26	US26D
3-1/2" x 3-1/2" GAR Square	✓	✓		✓	✓	✓	✓	✓
3-1/2" x 3-1/2" GAR Radius	✓	✓	✓	✓	✓	✓	✓	✓
4" x 4" GAR Square	✓	✓		✓	✓	✓	✓	✓
4" x 4" GAR Radius	✓	✓	✓	✓	✓	✓	✓	✓



Ball Bearing Square



Ball Bearing Radius

Ball Bearing Hinges	US1D	US3	US4B	US5	US10B	US15	US26	US26D
3-1/2" x 3-1/2" GAR Square		✓	✓	✓	✓	✓	✓	✓
3-1/2" x 3-1/2" GAR Radius	✓	✓	✓	✓	✓	✓	✓	✓
4" x 4" GAR Square	✓	✓	✓	✓	✓	✓	✓	✓
4" x 4" GAR Radius	✓	✓	✓	✓	✓	✓	✓	✓

## FIRE DOOR HINGES

When completing a fire-rated unit, it is important to utilize self-closing or commercial hinges.



4" x 4" Self-Closing Hinge

4" Self Closing Hinges	US1D	US3	US4B	US10B	US15	US26	US26D
4" x 4"	✓	✓	✓	✓	✓	✓	✓



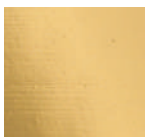
4-1/2" x 4-1/2" Commercial Hinge

4-1/2" Commercial Hinges	US1D	US3	US4B	US10B	US26	US26D
4-1/2" x 4-1/2"	✓	✓	✓	✓	✓	✓
4-1/2" x 4-1/2" Ball Bearing		✓		✓	✓	✓

## AVAILABLE FINISHES



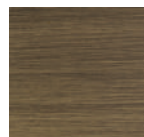
US1D Flat Black



US3 Bright Brass



US4B Bright Satin Brass



US5 Antique Brass



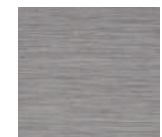
US10B Oil Rubbed Bronze



US15 Satin Nickel



US26 Bright Chrome



US26D Satin Chrome

# HARDWARE

Locksets are available in either a knob or lever style and provide tough, reliable performance and enduring style. They are available in multiple finishes to match the hinges used on the door.

## STANDARD RESIDENTIAL SERIES LOCKS



**Flair**  
Shown in US10B

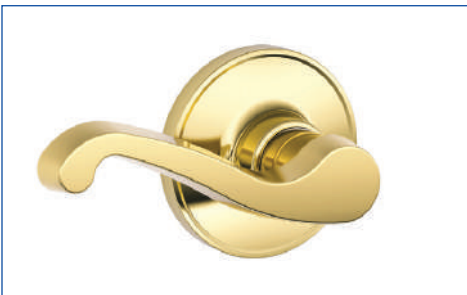


**Accent**  
Shown in US15



**Plymouth**  
Shown in US15

## BUILDER'S SERIES LOCKS



**LaSalle**  
Shown in US3



**Torino**  
Shown in US15

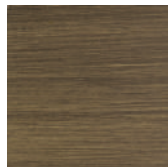


**Corona**  
Shown in US26

## AVAILABLE FINISHES



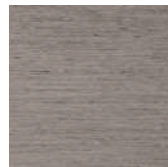
**US3**  
Bright Brass



**US5**  
Antique Brass



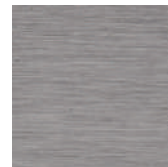
**US10B**  
Oil Rubbed  
Bronze



**US15**  
Satin Nickel



**US26**  
Bright Chrome



**US26D**  
Satin Chrome



**US92**  
Aluminum

# CATCHES

Catches are an alternative way to close a door and are often used in a closet application.

Ball catches and Roller catches are recessed in the top of the door while a Surface Magnetic Catch is installed on the face of the door. A strike is installed on the head jamb and the two keep the door closed without the need of a latch. The Concealed Magnetic Catch is recessed into the top of the door and the head jamb which conceals the catch.

## PRECISION™

### Concealed Magnetic Catch



CATCHES	US1D	US3	US5	US10B	US15	US26	US26D	US92
Garris Specialty Products Ball Catch		✓	✓	✓	✓	✓	✓	
Surface Magnetic Catch		✓						✓
Roller Catch		✓		✓	✓	✓		

# INTERIOR DOOR CATALOG

